

Figure 1.

This is what I am starting with. First thing that I looked at was the Video Device config box. Notice the IP address VS. What is in the connection box on the left side of the screen. If I use the camera like this I get video and all looks good. Except for the EZ cloud save. I also noticed that I based on the file name that I have added camera overlay to the project. I am going to start by removing the overlays. It is strange that it works this way when the camera can't be at that IP address. When I try to access camera setting I get an error see Figure 2 Below. No error when connecting to the ezb itself. It give me the phrase that I programmed into it.

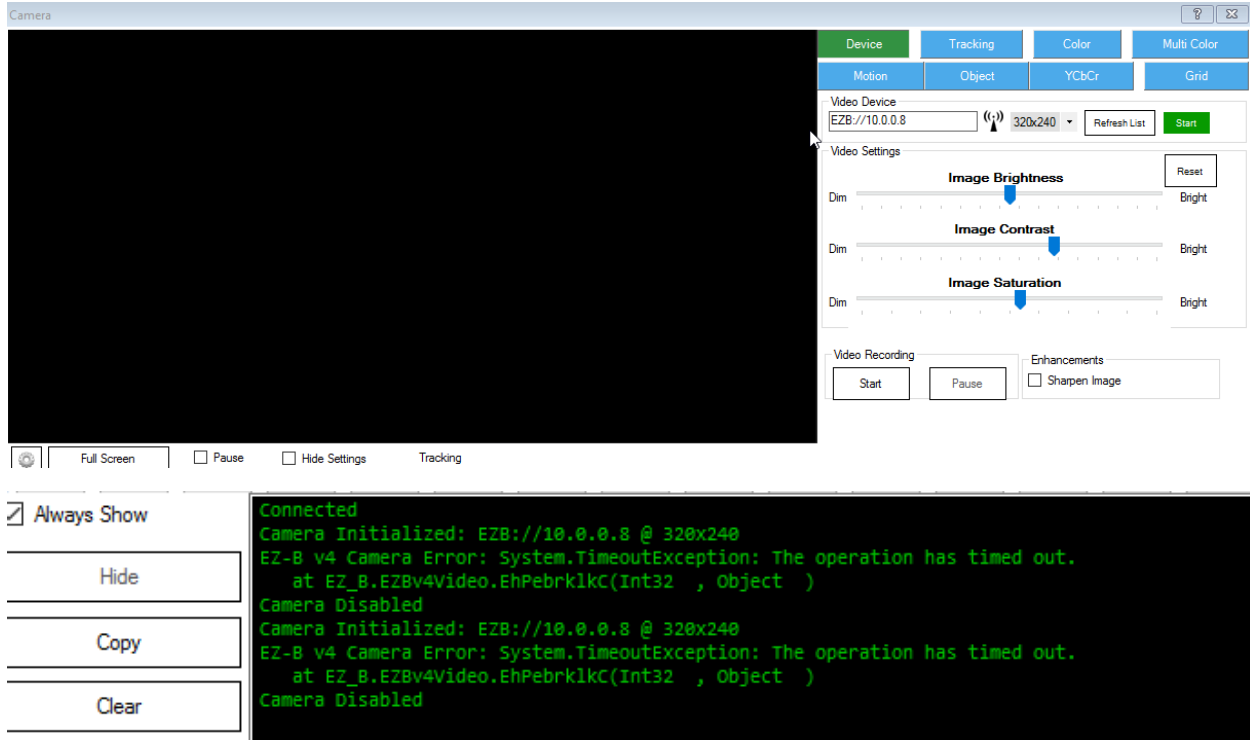


Figure 3.

I tried to save the project after removing the overlay. Got the error in figure 4. The Ip address for the device is still off. Going to change that next. I am going to disconnect from the EZB and the change the address of the device, then re-connect to the EZB. No more errors during connection. Going to try and save the project to local disk. No matter if I do a save or save as I get the same error as figure 4. I started the camera and below is the bottom of the screen. But yet I have no picture is the display. When I stop the camera I get the camera disabled at the bottom of the screen. Which I would expect. The camera also making a buzzing noise with you hit start. I am going to remove the WiFi connection to the EZB, then power the EZB off. Wait a couple of minutes and start it all over again and connect to it.

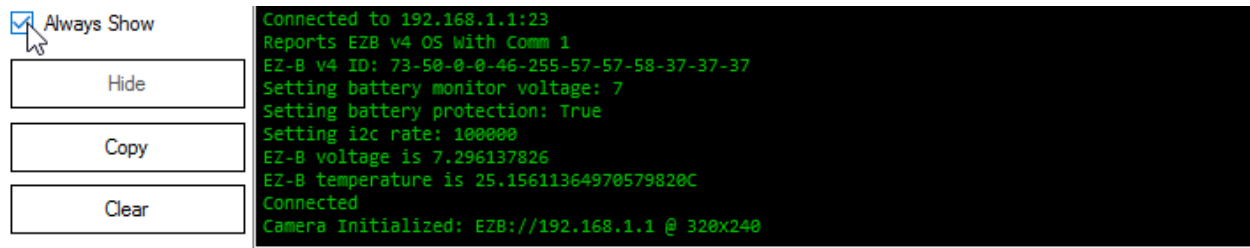


Figure 5.

I am not closing EZ-builder on my laptop. Started back up the EZB. Connected to it with no errors. Going to start the camera see what happens. No errors on start, as can be seen in figure 6.

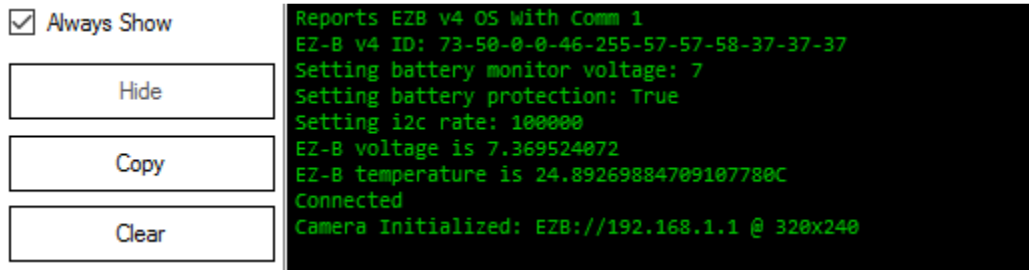


Figure 6.

However I still do not have a Video picture. As can be seen from figure 7. This might be unique to me but I can't change video devices while connected to the EZB. I Start to time out errors. I am going to start a new project with only the camera in it and see how that goes.

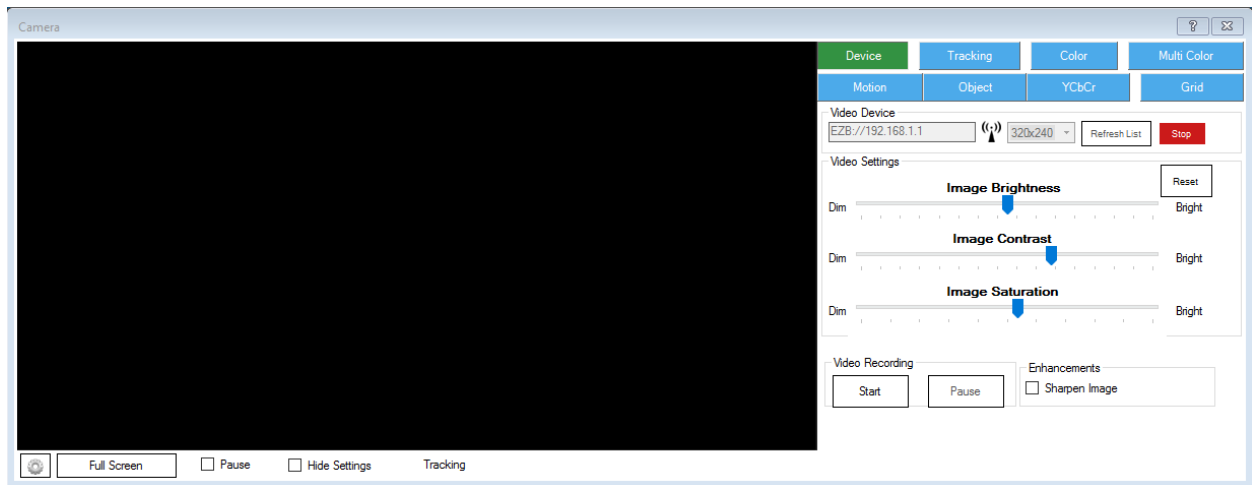


Figure 7.

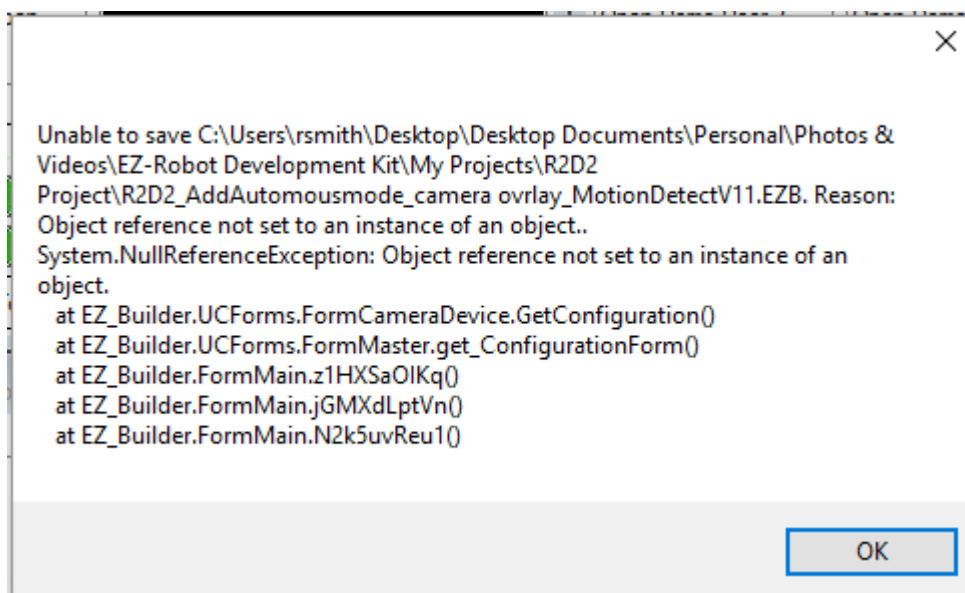


Figure 4.

EZ-Builder Error

EZ-Buider returned an error - the software may be unstable, consider restarting EZ-Builder. You may copy the error message and post on the forum for assistance. Be prepared to answer questions or provide an example project that will assist us in understanding the origin of the error.

Version: 2018.05.01.00

```
System.NullReferenceException: Object reference not set to an instance of an object
  at EZ_Builder.UCForms.FormCameraDevice.GetConfiguration()
  at EZ_Builder.UCForms.FormCameraDevice.j8pwXDnNdZa(Object , EventArgs )
  at System.Windows.Forms.Control.OnClick(EventArgs e)
  at System.Windows.Forms.Button.OnClick(EventArgs e)
  at System.Windows.Forms.Button.OnMouseUp(MouseEventArgs mevent)
  at System.Windows.Forms.Control.WmMouseUp(Message& m, MouseButton button, Int32 clicks)
  at System.Windows.Forms.Control.WndProc(Message& m)
  at System.Windows.Forms.ButtonBase.WndProc(Message& m)
  at System.Windows.Forms.Button.WndProc(Message& m)
  at System.Windows.Forms.Control.ControlNativeWindow.OnMessage(Message& m)
  at System.Windows.Forms.Control.ControlNativeWindow.WndProc(Message& m)
  at System.Windows.Forms.NativeWindow.Callback(IntPtr hWnd, Int32 msg, IntPtr wparam, IntPtr lparam)
```

OK

Copy To Clipboard

Figure 2.

